



**Farm Service  
Center Co.**

FARMSERVICECENTER.NET  
719-754-3425



# Jetta BRAND ITALIAN RYEGRASS

*Cover Crop/Emergency Forage*

## Agronomics

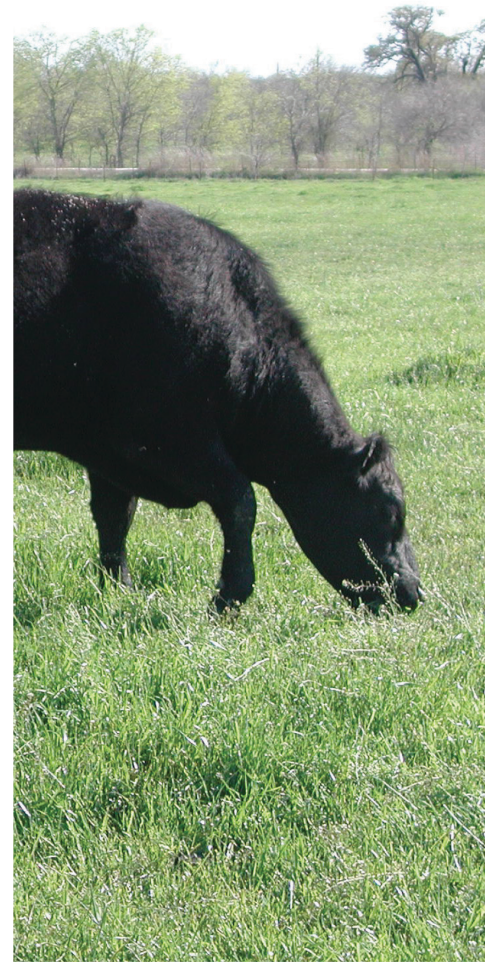
	5	4	3	2	1
Yield	●				
Maturity			●		
Palatability	●				
Digestibility	●				
Disease tolerance		●			
Stand density	●				
Winter hardiness		●			
Drought tolerance			●		
Grazing adaptability	●				
Fit grass/legume mix	●				
Leaf texture	●				

## Performance/Management

- Cool-season biennial tetraploid for use as a late-summer/early-fall cover crop or as a late-spring planted nurse or forage crop
- Being a biennial tetraploid, Jetta has a good chance of surviving winter, but will not put on a seed head when planted late spring
- Use lower seeding rate if using as a nurse crop to establish legumes

## Seeding Rate Recommendations

- See chart below



## Grasses and Mixtures Recommended Seeding Rates

Product	Bag Size	Seeding Method and Pounds Per Acre				
		Drilled Pure Stands	Broadcast Pure Stands	Interseeding	Over/Frost Seeding	Grass/Hay Mixture
Jetta Brand Italian Ryegrass	25	30 to 35	35 to 40	15 to 20	15 to 20	3 to 5

Rating Key: 1 = Early or Poor  
3 = Average  
5 = Late or Best



Agriculture Division of DowDuPont

® ,™ ,SM Trademarks and service marks of DuPont, Dow AgroSciences or Pioneer, and their respective owners.  
©2018 Corteva™ Agriscience. All rights reserved.